


**Legenda**

 Pedido prosp. pesquisa - MNPPP0500

Vértices	X (m)	Y (m)	Vértices	X (m)	Y (m)	Vértices	X (m)	Y (m)
1	27633,0	109873,0	12	30580,0	78450,0	23	25917,0	86702,0
2	32795,0	109877,0	13	17841,0	78415,0	24	26100,0	86578,0
3	28640,0	97682,0	14	17824,0	85813,0	25	26270,0	86594,0
4	28644,0	97508,0	15	24258,0	87187,0	26	27097,0	87478,0
5	28715,0	97409,0	16	23898,0	86766,0	27	27516,0	87519,0
6	40368,0	87659,0	17	23845,0	86613,0	28	27650,0	87609,0
7	39034,0	85893,0	18	23919,0	86436,0	29	27705,0	87772,0
8	36215,0	84028,0	19	24374,0	86054,0	30	27614,0	88279,0
9	33403,0	80314,0	20	25054,0	86026,0	31	27522,0	88390,0
10	33379,0	79503,0	21	25187,0	86086,0	32	27394,0	88433,0
11	32016,0	79265,0	22	25731,0	86613,0	33	27688,0	95096,0

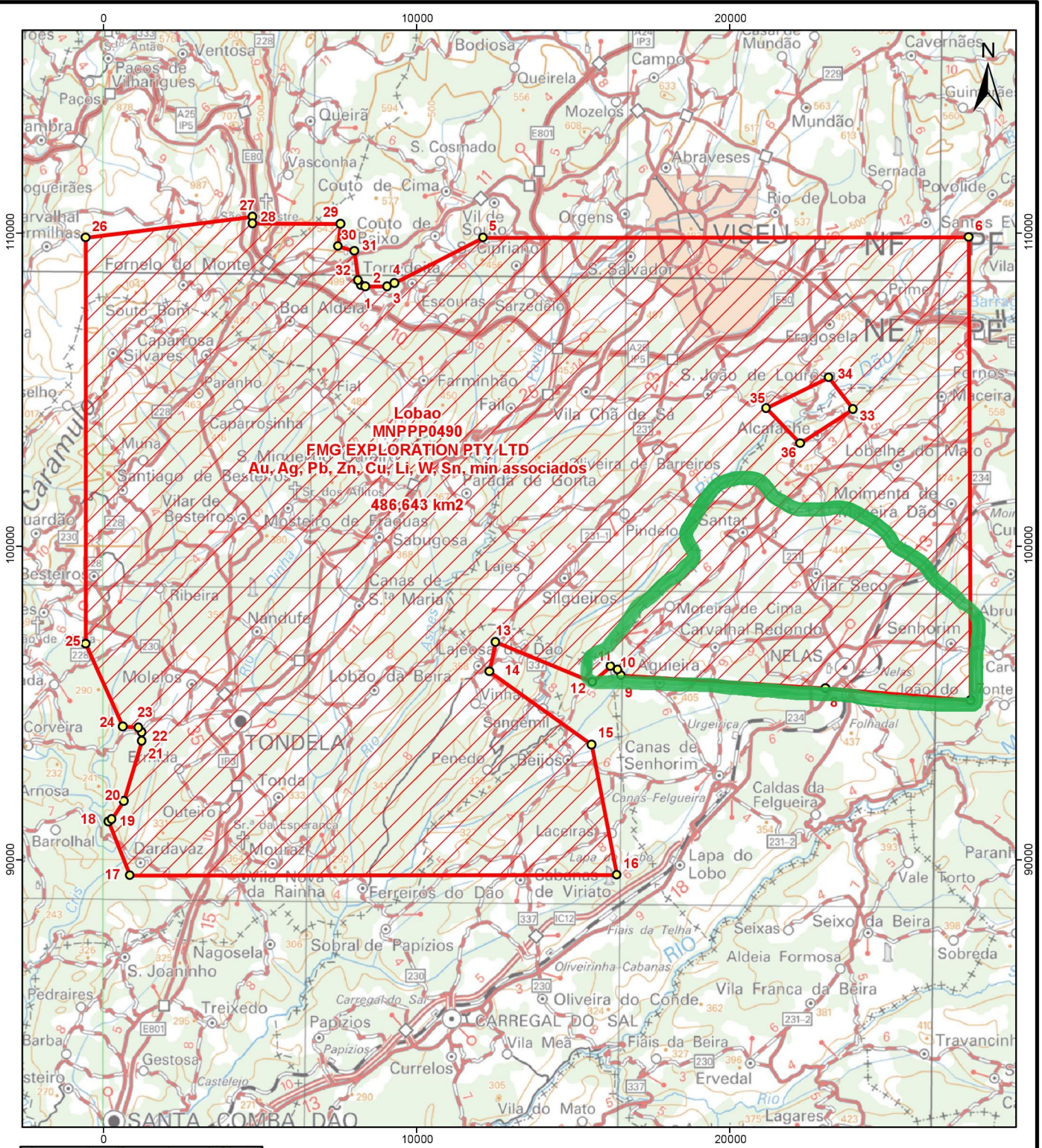
Limites Administrativos do IGP - CAOP 2017  
 Base cartográfica do IGeoE à escala 1:250.000  
 Sistema de referência: PT-TM06/ETRS89




Assunto: Pedido prospeção e pesquisa  
 Nº de Cadastro: MNPPP0500  
 Titular: FMG EXPLORATION PTY LTD  
 Designação Área: BOA VISTA  
 Substância: Au, Ag, Pb, Zn, Cu, Li, W, Sn, min associados  
 Área Total (Pedido/Contrato) Km2: 260,331  
 Concelho(s): Viseu, Nelas, Mangualde, Penalva do Castelo, Gouveia, Seia, Oliveira do Hospital, Tábua, Carregal do Sal

Escala 1:180.000  
 Mapa nº 006/SIG/2019  
 Data: 07-01-2019  
 Executado por:  
 Isabel Miguel





**Legenda**

 **Pedido prospeção pesquisa MNPPP0490**

Vértices	X (m)	Y (m)	13	12527,0	96943,0	26	-557,0	109851,0
1	8231,0	108350,0	14	12334,0	96008,0	27	4776,0	110526,0
2	8367,0	108299,0	15	15592,0	93677,0	28	4768,0	110307,0
3	9064,0	108299,0	16	16402,0	89510,0	29	7581,0	110302,0
4	9295,0	108417,0	17	855,0	89494,0	30	7504,0	109577,0
5	12129,0	109861,0	18	171,0	91216,0	31	8021,0	109431,0
6	27633,0	109873,0	19	276,0	91296,0	32	8137,0	108500,0
7	27686,0	95097,0	20	665,0	91874,0	Área de exclusão		
8	23058,0	95474,0	21	1244,0	93790,0	Vértices	X (m)	Y (m)
9	16542,0	95876,0	22	1240,0	94064,0	33	23948,0	104379,0
10	16433,0	96071,0	23	1124,0	94216,0	34	23158,0	105385,0
11	16196,0	96178,0	24	633,0	94254,0	35	21163,0	104413,0
12	15622,0	95674,0	25	-558,0	96895,0	36	22248,0	103294,0

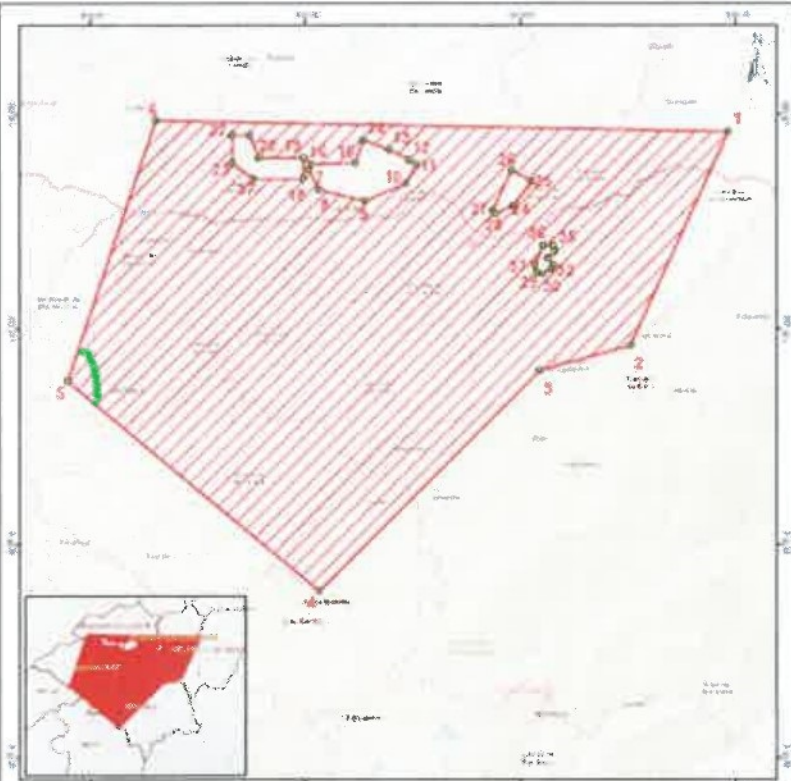
Limites Administrativos do IGP - CAOP 2017  
 Base cartográfica do IGeoE à escala 1:250.000  
 Sistema de referência: PT-TM06/ETRS89



Assunto: Pedido de prospeção e pesquisa  
 N.º Cadastro: MNPPP0490  
 Titular: FMG EXPLORATION PTY LTD  
 Designação Área: Lobão  
 Substância: Au, Ag, Pb, Zn, Cu, Li, W, Sn, min associados  
 Área Total (Pedido/Contrato) Km2: 486,643  
 Concelhos: Tondela, Vouzela, Viseu, Mangualde, Nelas, Carregal do Sal

Escala 1:180.000  
 Mapa nº 038/SIG/2019  
 Data: 15-01-2019  
 Executado por:  
 Isabel Miguel





Verticais	X (m)	Y (m)	Área 1 (km²)			Área 2 (km²)			Área 3 (km²)			Área 4 (km²)		
			Ordem	X (m)	Y (m)	Ordem	X (m)	Y (m)	Ordem	X (m)	Y (m)	Ordem	X (m)	Y (m)
1	19920.0	52577.0	1	19920.0	52577.0	1	19920.0	52577.0	1	19920.0	52577.0	1	19920.0	52577.0
2	19130.0	58303.0	2	19130.0	58303.0	2	19130.0	58303.0	2	19130.0	58303.0	2	19130.0	58303.0
3	16863.0	68069.0	3	16863.0	68069.0	3	16863.0	68069.0	3	16863.0	68069.0	3	16863.0	68069.0
4	43000.0	67369.0	4	43000.0	67369.0	4	43000.0	67369.0	4	43000.0	67369.0	4	43000.0	67369.0
5	10170.0	63061.0	5	10170.0	63061.0	5	10170.0	63061.0	5	10170.0	63061.0	5	10170.0	63061.0
6	19112.0	58769.0	6	19112.0	58769.0	6	19112.0	58769.0	6	19112.0	58769.0	6	19112.0	58769.0
			7	19920.0	52577.0	7	19920.0	52577.0	7	19920.0	52577.0	7	19920.0	52577.0
			8	19920.0	52577.0	8	19920.0	52577.0	8	19920.0	52577.0	8	19920.0	52577.0
			9	19920.0	52577.0	9	19920.0	52577.0	9	19920.0	52577.0	9	19920.0	52577.0
			10	19920.0	52577.0	10	19920.0	52577.0	10	19920.0	52577.0	10	19920.0	52577.0

**Legenda**

Área potencial de IRI

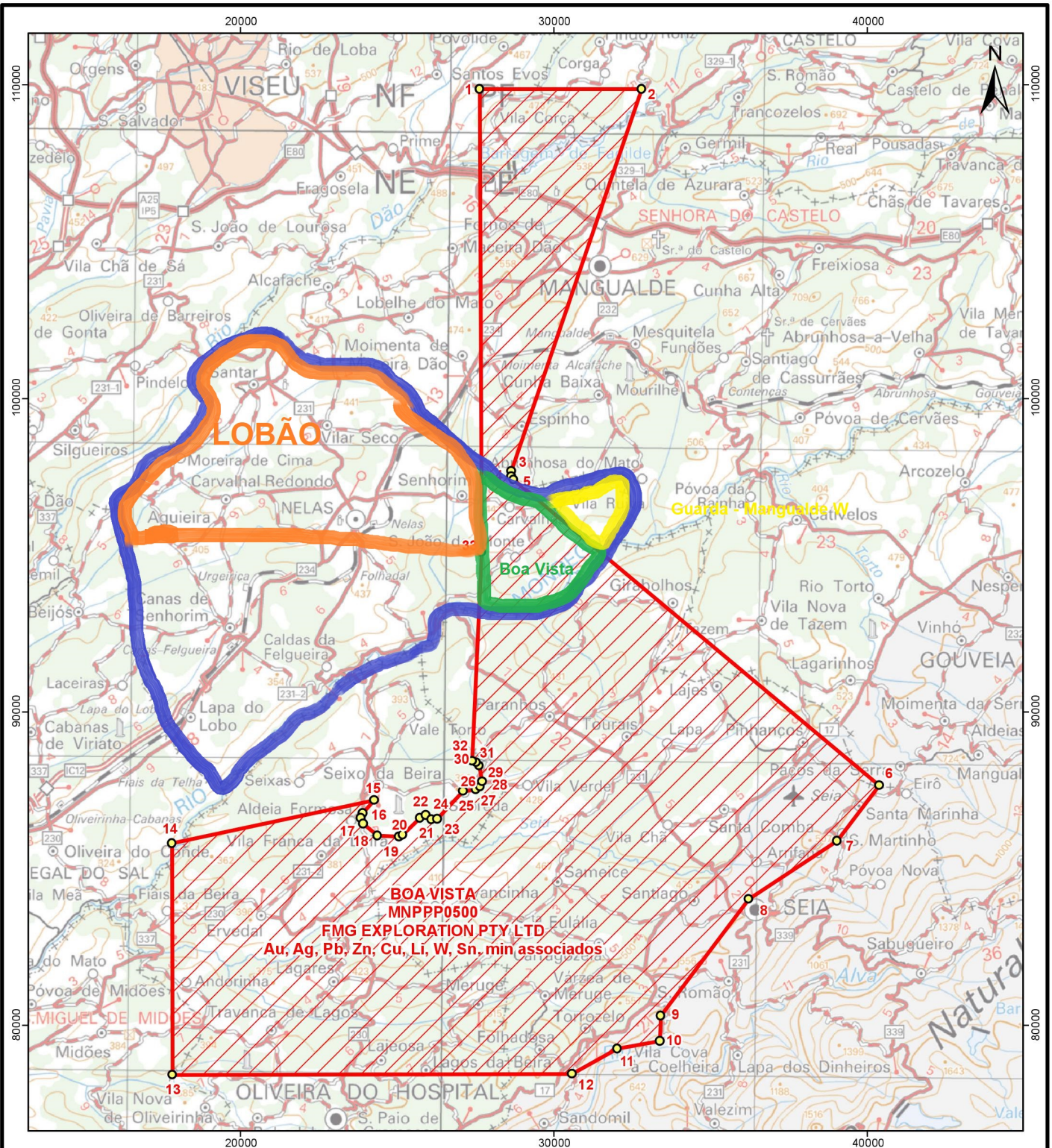
Unidade de Referência: Datum 1976  
 Escala: 1:50000  
 Sistema de Coordenadas: UTM  
 Datum: WGS 84




Assunto: Área potencial de IRI  
 Designação da área: Guarda-Ranção III  
 Área total: 357,98 km<sup>2</sup>

Escala: 1:50000  
 Município: Guarda  
 Data: 20/06/2010  
 Elaborado por: [Nome]





**Legenda**

 Pedido prosp. pesquisa - MNPPP500

Vértices	X (m)	Y (m)	Vértices	X (m)	Y (m)	Vértices	X (m)	Y (m)
1	27633,0	109873,0	12	30580,0	78450,0	23	25917,0	86702,0
2	32795,0	109877,0	13	17841,0	78415,0	24	26100,0	86578,0
3	28640,0	97682,0	14	17824,0	85813,0	25	26270,0	86594,0
4	28644,0	97508,0	15	24258,0	87187,0	26	27097,0	87478,0
5	28715,0	97409,0	16	23898,0	86766,0	27	27516,0	87519,0
6	40368,0	87659,0	17	23845,0	86613,0	28	27650,0	87609,0
7	39034,0	85893,0	18	23919,0	86436,0	29	27705,0	87772,0
8	36215,0	84028,0	19	24374,0	86054,0	30	27614,0	88279,0
9	33403,0	80314,0	20	25054,0	86026,0	31	27522,0	88390,0
10	33379,0	79503,0	21	25187,0	86086,0	32	27394,0	88433,0
11	32016,0	79265,0	22	25731,0	86613,0	33	27688,0	95096,0

Limites Administrativos do IGP - CAOP 2017  
 Base cartográfica do IGeoE à escala 1:250.000  
 Sistema de referência: PT-TM06/ETRS89



Assunto: Pedido prospeção e pesquisa  
 Nº de Cadastro: MNPPP500  
 Titular: FMG EXPLORATION PTY LTD  
 Designação Área: BOA VISTA  
 Substância: Au, Ag, Pb, Zn, Cu, Li, W, Sn, min associados  
 Área Total (Pedido/Contrato) Km2: 260,331  
 Concelho(s): Viseu, Nelas, Mangualde, Penalva do Castelo, Gouveia, Seia, Oliveira do Hospital, Tábua, Carregal do Sal

Escala 1:180.000  
 Mapa nº 006/SIG/2019  
 Data: 07-01-2019  
 Executado por:  
 Isabel Miguel